

Installation Technique

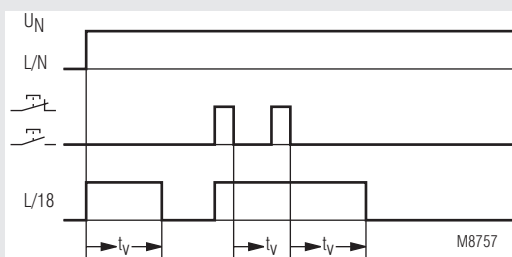
MINITIMER
Fan Control Timer
RK 8810/005

Translation
of the original instructions



- According to EN 60669-1, EN 60669-2-1
- Setting range 0.5 ... 10 min
- After the light the fan switched on
- Switch for continuous light of the exhauster on unit
- Contact: 16 A
- Width 17.5 mm

Function Diagram



Approvals and Markings



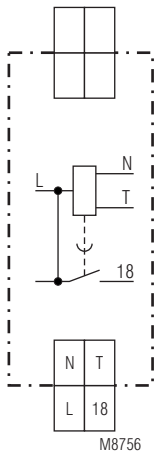
Application

Control of fans

Function

The fan starts approx. 1 min. after the light is switched on. When the light is switched off the fan will continue to run for the adjusted delay time.

Circuit Diagram



RK 8810.41/005

Notes

Unit and push button have to be connected to the same phase (see connection diagram) The output contact is not volt free.

Maintenance

Inspection test and maintenance intervals are to be performed annually.

Technical Data

Time Circuit

Time range: 0.5 ... 10 min
Repeat accuracy: < 1 % of setting value

Input

Nominal voltage U_N : AC 230 V
Voltage range: 0.9 ... 1.1 U_N
Nominal consumption: Approx. 5 VA
Nominal frequency: 50 / 60 Hz

Output

Contacts: 1 NO contact, delay
Contact opening gap: > 3 mm
Thermal current I_{th} : 16 A
fan load: 200 VA
Short circuit strength
max. fuse rating: 16 A gG / gL IEC/EN 60947-5-1
Mechanical life: > 1 x 10⁶ switching cycles

Connection Terminals

Terminal designation	Signal description
L, N	Auxiliary voltage AC
T, L	Button
L, 18	Contact output

Technical Data

General Data

Nominal operating mode: Impulse operation / continuous operation

Temperature range

Operation: - 20 ... + 50°C

Storage: - 40 ... + 70°C

Clearance and creepage distances

Rated impulse voltage /
pollution degree: 4 kV / 2 IEC 60664-1

EMC

Electrostatic discharge (ESD): 8 kV (air) IEC/EN 61000-4-2

HF irradiation

80 MHz ... 1 GHz: 10 V / m IEC/EN 61000-4-3

1 GHz ... 2.7 GHz: 10 V / m IEC/EN 61000-4-3

Fast transients: 2 kV IEC/EN 61000-4-4

Surge voltages

between

wires for power supply: 1 kV IEC/EN 61000-4-5

between wire and ground: 2 kV IEC/EN 61000-4-5

HF wire guided

0.15 ... 80 MHz: 10 V IEC/EN 61000-4-6

Interference suppression: Limit value class B EN 55011

Degree of protection:

Housing: IP 40 IEC/EN 60529

Terminals: IP 20 IEC/EN 60529

Enclosure:

Thermoplast with V0-behaviour

according to UL subj. 94

Vibration resistance Amplitude 0,35 mm

frequency 10 ... 55 Hz IEC/EN 60068-2-6

20 / 050 / 04 IEC/EN 60068-1

EN 50005

Wire connection: DIN 46228-1/-2/-3/-4

Fixed screw terminals

Cross section: 0.5 ... 10 mm² (AWG 20 - 8) solid or
0.5 ... 6 mm² (AWG 20 - 10)

stranded wire with and without ferrules

10 mm

Fixing torque: 0.8 Nm

Wire fixing: Cross-head screw / M3.5 box terminals

Mounting: DIN rail IEC/EN 60715

Weight: Approx. 80 g

Dimensions

Width x Height x Depth: 17.5 x 90 x 66 mm

Standard Type

RK 8810.41/005 AC 230 V 50 / 60 Hz 0.5 ... 10 min

Article number: 0058996

• Output: 1 NO contact, delay

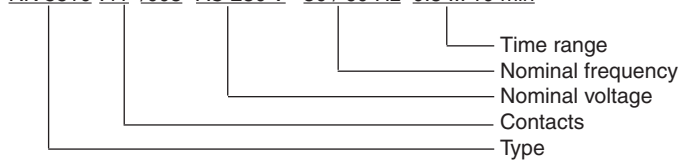
• Nominal voltage U_N : AC 230 V

• Timer range: 0.5 ... 10 min

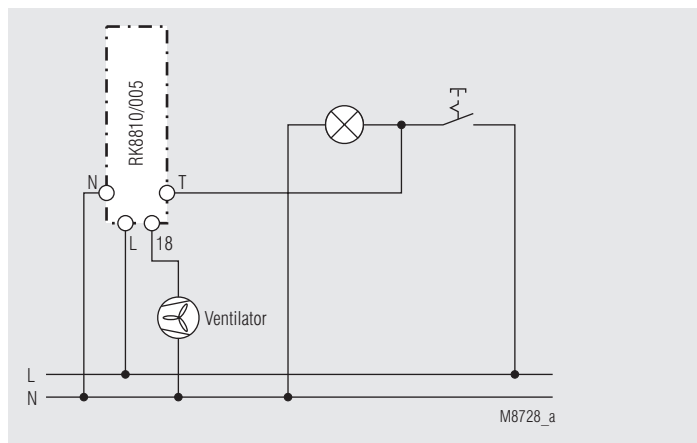
• Width: 17.5 mm

Ordering Example

RK 8810 .41 /005 AC 230 V 50 / 60 Hz 0.5 ... 10 min



Application Example



circuit L on push button