

# Installation Technique

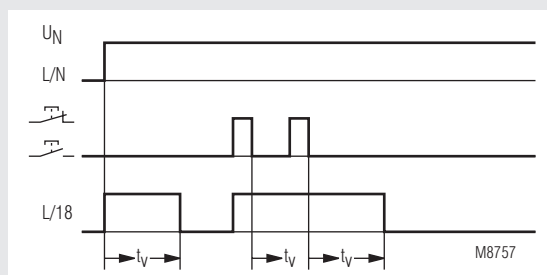
## MINITIMER Staircase Lighting Time Switch IK 8810

Translation  
of the original instructions



- According to EN 60669
- Setting range 0.5 ... 10 min.
- For 4-wire circuit L on push button and 3-wire circuit N on push button
- Can be retriggered
- Switch for continuous light on unit
- Contact: 16 A
- Width 17.5 mm

### Function Diagram



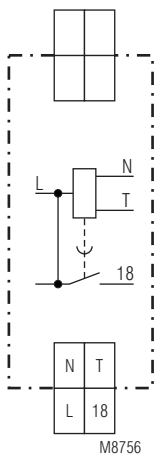
### Approvals and Markings



### Application

- Staircase lighting time switch
- Timer, release delay
- Follow-up switch

### Circuit Diagram



IK 8810.41

### Function

The timing is retriggerable, i.e. if the push button is pressed again during timing the adjusted delay time starts again without interruption.

### Indication

LED: On when output relay activated

### Notes

Unit and push button have to be connected to the same phase (see connection diagram) The output contact is not volt free. When voltage is connected to I/N the output contact is closed for the time adjusted on the unit. (single timing)

### Technical Data

#### Time Circuit

**Time range:** 0.5 ... 10 min  
**Repeat accuracy:** < 1 % of setting value

#### Input

**Nominal voltage  $U_N$ :** AC 230 V  
**Voltage range:** 0.8 ... 1.1  $U_N$   
**Nominal consumption**  
apparent power: 4 VA  
effective power: 1 W  
**Nominal frequency:** 50 / 60 Hz  
**Permitted residual current caused by glow lamps in the push buttons:** Max. 10 glow lamps à 1 mA

## Technical Data

### Output

<b>Contacts:</b>	1 NO contact, delay
<b>Contact opening gap:</b>	< 3 mm
<b>Thermal current <math>I_{th}</math>:</b>	16 A
<b>Switching capacity with lamp load</b>	
Fluorescent lamp load	
Duo switching:	
(series compensated)	20 lamps with 58 W each
	$5 \times 10^4$ switching cycles
Glow lamp load:	1200 W at $T_{ein}/T_{aus} = 1 \text{ s} / 1 \text{ s}$
<b>Short circuit strength</b>	
<b>max. fuse rating:</b>	16 A gG / gL IEC/EN 60947-5-1
<b>Mechanical life:</b>	> $10^6$ switching cycles

### General Data

<b>Nominal operating mode:</b>	Impulse operation
<b>Temperature range:</b>	-20 ... +60°C
<b>Clearance and creepage distances</b>	
rated impulse voltage / pollution degree:	4 kV / 2 IEC 60664-1
<b>EMC</b>	
Electrostatic discharge (ESD):	8 kV (air) IEC/EN 61000-4-2
HF-irradiation:	10 V / m IEC/EN 61000-4-3
Fast transients:	2 kV IEC/EN 61000-4-4
Surge voltages between wires for power supply:	2 kV IEC/EN 61000-4-5
between wire and ground:	4 kV IEC/EN 61000-4-5
Interference suppression:	Limit value class B EN 55011
<b>Degree of protection</b>	
Housing:	IP 40 IEC/EN 60529
Terminals:	IP 20 IEC/EN 60529
<b>Housing:</b>	Thermoplast with V0-behaviour according to UL subj. 94
<b>Vibration resistance</b>	Amplitude 0.35 mm frequency 10 ... 55 Hz IEC/EN 60068-2-6 20 / 045 / 04 IEC/EN 60068-1
<b>Climate resistance:</b>	
<b>Terminal designation:</b>	EN 50005
<b>Wire connection:</b>	2 x 2.5 mm <sup>2</sup> solid or 2 x 1.5 mm <sup>2</sup> stranded wire with sleeve DIN 46228-1/-2/-3/-4
<b>Wire fixing:</b>	Flat terminals with self-lifting clamping piece IEC/EN 60999-1
<b>Mounting:</b>	DIN rail IEC/EN 60715
<b>Weight:</b>	75 g

### Dimensions

**Width x Height x Depth:** 17.5 x 89 x 58 mm

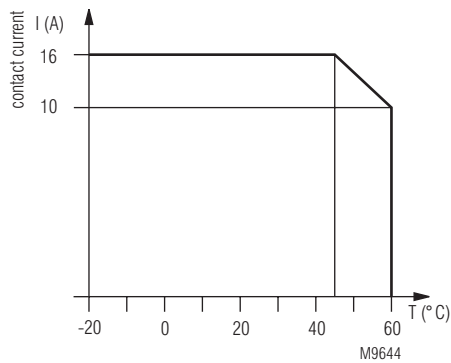
### Standard Type

IK 8810.41 AC 230 V 50 / 60 Hz 0.5 ... 10 min	
Article number:	0056928 stock item
• Output:	1 NO contact, delay
• Nominal voltage $U_N$ :	AC 230 V
• Timer range:	0.5 ... 10 min
• Width:	17.5 mm

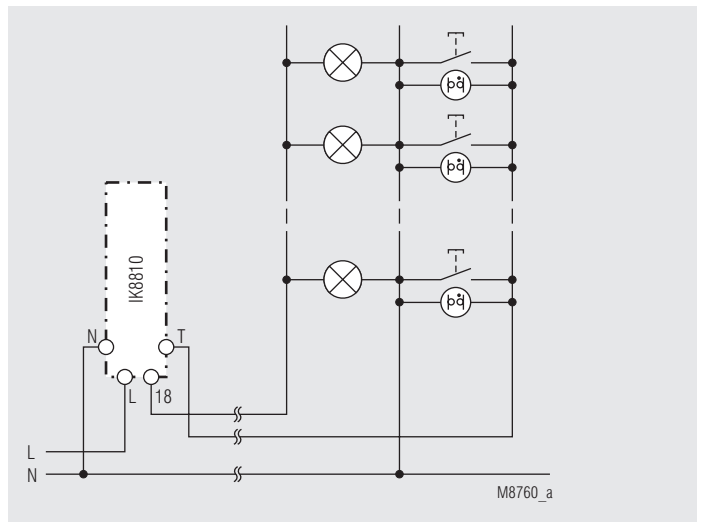
### Ordering Example

IK 8810	.41	AC 230 V	50 / 60 Hz	0.5 ... 10 min	
					Time range
					Nominal frequency
					Nominal voltage
					Contacts
					Type

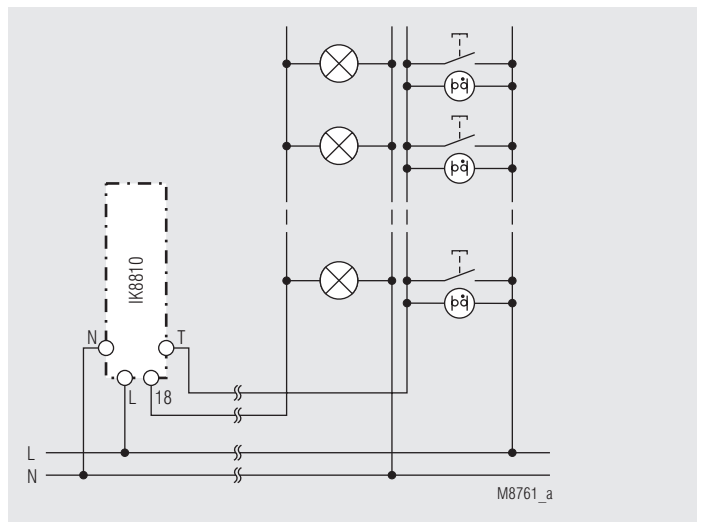
## Characteristics



## Application Examples



3-wire circuit N on push button



4-wire circuit L on push button