

# Cable entry of the new dimension

## KEL-QTA

Pat. pend.

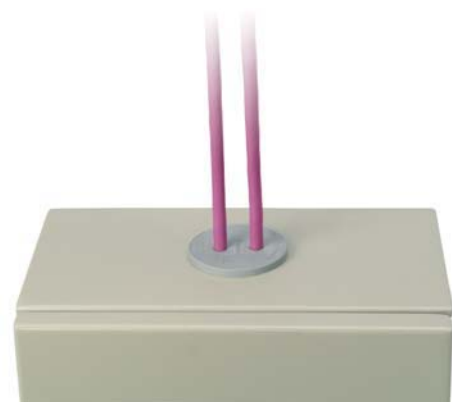
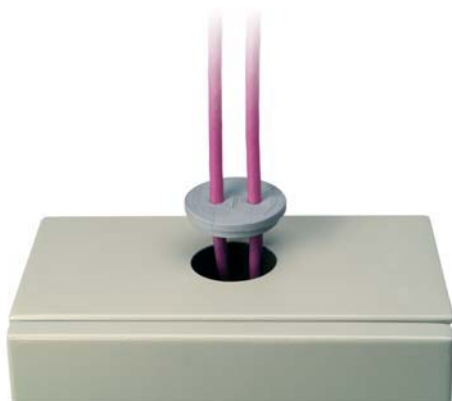
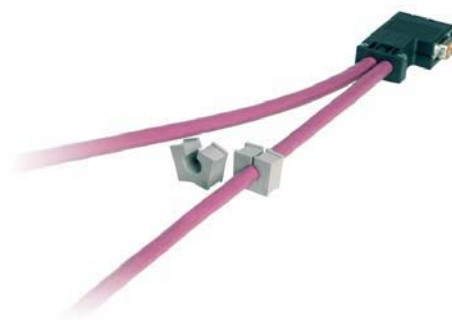
The quickest and easiest way to install cables.  
The KEL-QTA systems are pressed into the cut-outs without tools.

### The Advantages

- Increase your flexibility
- High packing-density because of multiple-inserts
- The most simple assembly of pre-terminated cables because of consequential split of the system
- Simple assembly and disassembly in case of change or service
- Cost-efficient solution
- Complete solutions save time and money



KEL-QTA 32, KEL-QTA 50, QT inserts



KEL-QTA 24/4



KEL-QTA 24/2-DP18



Area for prefabricated cables

Area for non-prefabricated cables

# Cable entry of the new dimension KEL-QTA

Pat. pend.

With the KEL-QTA series, you can insert and seal pre-fabricated cables.



KEL-QTA 24/2-DP18



KEL-QTA 24/4

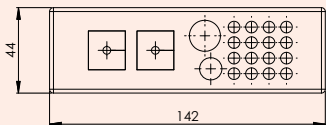
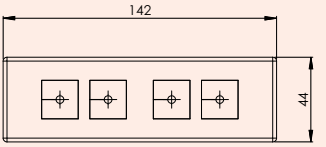
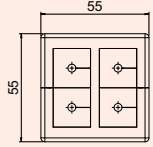


KEL-QTA B4 with inserts



KEL-QTA B4 equipped with cable and connector

## KEL-QTA cable entry plates

Description	Type	Model A for plate thick- ness of 1.5 – 2.5 mm	Model B for plate thick- ness of 2.8 – 4.0 mm	External dimensions DA in mm	Required cut-out size in mm	No. of cables		PU
		Order No.	Order No.			Pre-fabricated cables	Non-prefabricated cables	
	KEL-QTA 24/2-DP18	43642	–	142 x 44	112 x 35	2 x 3-15 mm	16 x to max 7 mm 1 x to max 12 mm 1 x to max 16 mm	10
	KEL-QTA 24/4	43644	–	142 x 35	112 x 35	4 x 3-15 mm	–	10
 <p><b>Specification:</b> Material: Elastomer UL-94 V0, self-extinguishing, halogen-free, silicone-free, Protection IP 54, can be achieved with correct assembly</p>	KEL-QTA B4	43660	–	55 x 55	44 x 44	4 x 3-15 mm	–	10

 The matching inserts can be found on page 31.



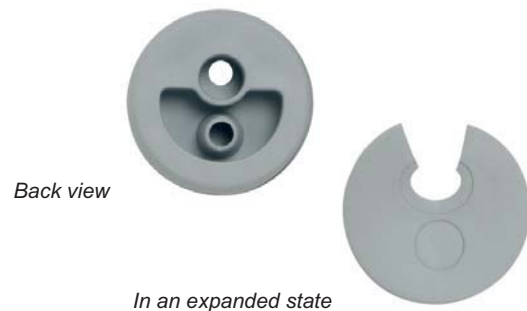
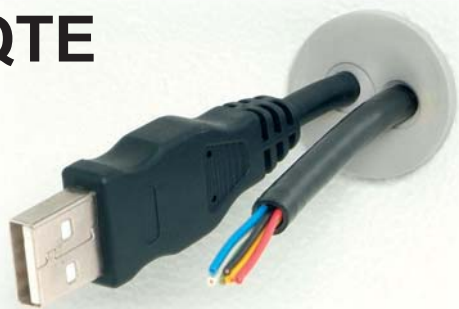
### KEL-QTA cable entry

Description	Type	Model A for plate thickness of 1.5 – 2.5 mm	Model B for plate thickness of 2.8 – 4.0 mm	External dimensions DA in mm	Required cut-out size in mm	No. of cables		PU
		Order No.	Order No.			Prefabricated cables	Non-prefabricated cables	
	KEL-QTA 32	43632	43636	38	32	1 x 3-15 mm	–	10
	KEL-QTA 50	43622	43626	60	50	2 x 3-15 mm	–	10

**Specification:**  
Material: Elastomer  
UL-94 V0, self-extinguishing,  
halogen-free, silicone-free,  
Protection IP 54, can be achieved  
with correct assembly

The matching inserts can be found on page 31.

### KEL-QTE



### KEL-QTE cable entry

Description	Type	for plate thickness of 1.5 – 2.5 mm	External diameters DA in mm	Required cut-out size in mm	No. of cables		PU
		Order No.			Prefabricated cables	Non-prefabricated cables	
	KEL-QTE 20/2.5	43412	24	20	1 x 2.6-3.2 mm	1 x to max 5.2 mm	10
	KEL-QTE 20/3	43413	24	20	1 x 3.1-3.8 mm	1 x to max 5.2 mm	10
	KEL-QTE 20/4	43414	24	20	1 x 3.8-4.8 mm	1 x to max 5.2 mm	10
	KEL-QTE 20/5	43415	24	20	1 x 4.7-5.6 mm	1 x to max 5.2 mm	10

**Specification:**  
Material: Elastomer  
UL-94 V0, self-extinguishing,  
halogen-free, silicone-free,  
Protection IP 54, can be achieved  
with correct assembly