

KDR cable entry system

flexible – simple – perfect



The KDR frame system is a perfect system for installation and sealing of pre-terminated cables.

The frame system is mounted into the control panel and is sealed by putting the sheet metals together. Subsequent alteration of the number of cables or of the cable diameters is very simple.

The KDR-frame system is used, where a multiplicity of cables has to be installed, e.g. on cabinets, walls of machine tools, control panels, flexible for bottom-, cover- and side walls.

The system is matching for all switch- and control cabinets.

Application range:

KDR cable entry system is used for installation of pre-terminated cables and hoses in the bottom area of switch- and control cabinets.

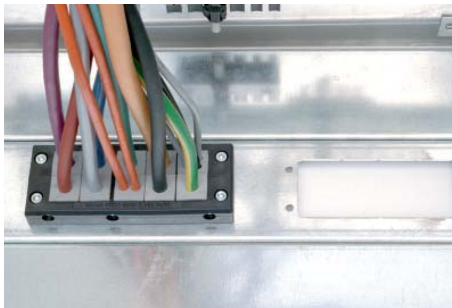
Function:

Pre-fabricated cables and/or hoses can be installed through the frame mounted at the bottom of the cabinet.

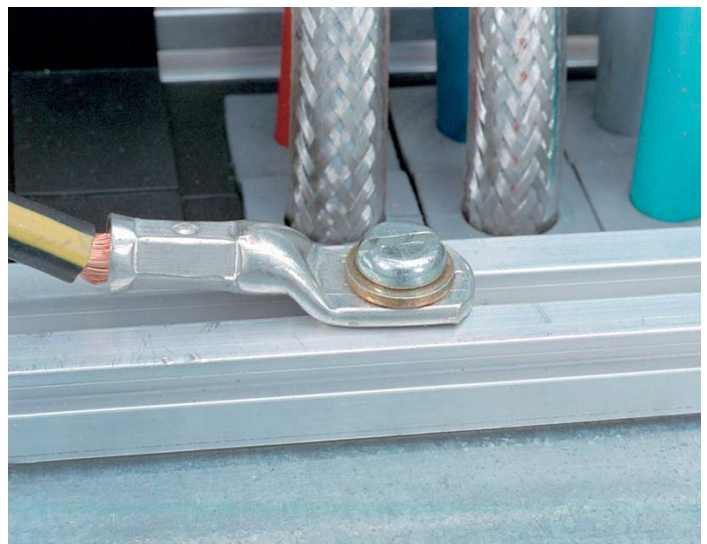
No extra components are necessary for installation of cables. The inserts assembled in the cable entry frames guarantee strain relief of the cables (observe the correct selection of insert according to cable diameter).

- any combination of KDR-frame and sheet metal possible
- perfect transition of KDR-frame and frame of the cabinet
- perfectly fitted in any switch- and control cabinet
- KDR-system configured to cut-out size A (see order-example)

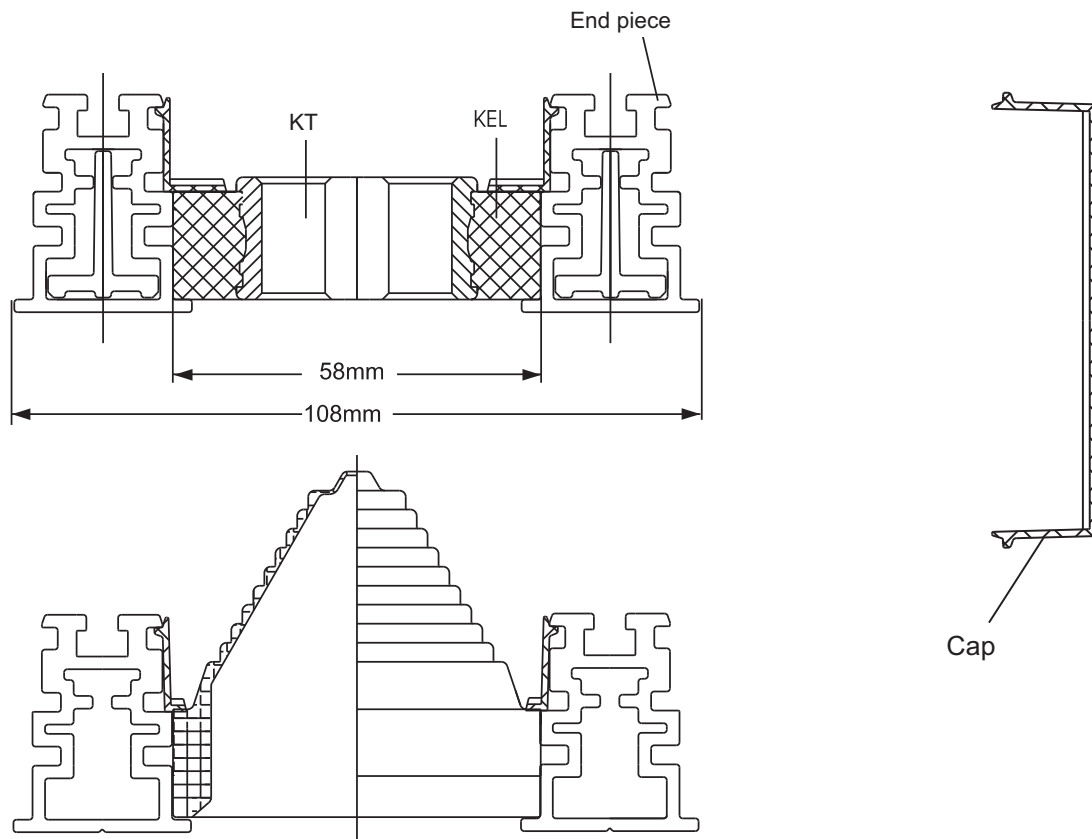
Pat. pend.
System concept:
Control cabinet movable sheet metal frame



Specification:
Protection IP 54



Section of the KDR-system



KDR ordering information

When ordering KDR-cable entry frame, please inform us of your cut-out size "A",
example: A = 999 mm → KDR 44999

Total length can be equipped as desired with any of the following types:

KDR cable entry frames					
	Type	Size	Length	Order No.	
	KEL-R 24/10	24	147 mm	43240	
	KEL-R 24/7	24	147 mm	43247	
	KEL-R 24/5	24	147 mm	43245	
	KEL-R 24/4	24	147 mm	43244	
	KEL-R 16/8	16	147 mm	43168	
	KEL-R 16/5	16	147 mm	43165	
	KEL-R 16/4	16	147 mm	43164	
	KEL-R 16/2	16	147 mm	43162	
	KDR			xxx mm	44xxx
	KT-Uni	∅ 3 - 40 mm		58 mm	43100
Cap			172 mm	43150	
End piece			2 piece	43160	

Included in delivery: - KDR frames by length
- End pieces (2 pieces)