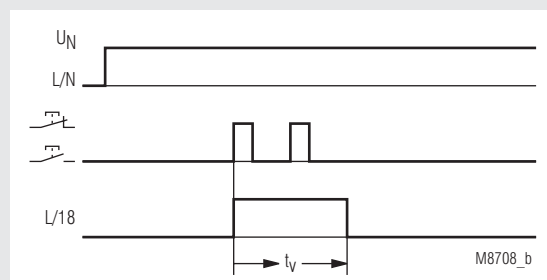


Staircase lighting time switch RK 8810/001 minitimer

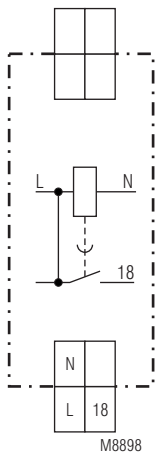


- According to EN 60669
- Setting range 0,5 ... 10 min.
- For 3-wire circuit N on push button
- Can not be retrigged
- Switch for continuous light on unit
- Contact: 16 A
- Width 17,5 mm

Function diagram



Circuit diagram



RK 8810.41/001

Approval and marking



Application

- Staircase lighting time switch
- Timer, release delay

Notes

Unit and push button have to be connected to the same phase (see connection diagram) The output contact is not volt free.

Technical Data

Time circuit

Time range: 0,5 ... 10 min
Repeat accuracy: < 1 % of setting value

Input

Nominal voltage U_N : AC 230 V
Voltage range: 0,9 ... 1,1 U_N
Nominal consumption: approx. 5 VA
Nominal frequency: 50 / 60 Hz
Permitted residual current caused by glow lamps in the push buttons: depending on load current
Min. pulse duration: 30 ms

Technische Daten

Output

Contacts:	1 NO contact, delay not floating	
Contact opening gap:	> 3 mm	
Thermal current I_{th}:	16 A	
Switching capacity with lamp load	Fluorescent lamp load	
Duo switching:	(series compensated) 2 x 20 lamps with 58 W each	
Glow lamp load:	2000 W	
Short circuit current strength:	> 700 A	
Short circuit strength	impulse operation / continuous operation	
max. fuse rating:	16 AgL	IEC/EN 60 947-5-1
Mechanical life:	> 1 x 10 ⁶ switching cycles	

General Data

Nominal operating mode:	impulse operation / continuous operation	
Temperature range:	- 20 ... + 50°C	
Clearance and creepage distances	rated impuls voltage / pollution degree: 4 kV / 2 IEC 60 664-1	
EMC	Electrostatic discharge (ESD): 8 kV (air) IEC/EN 61 000-4-2	
Fast transients:	2 kV IEC/EN 61 000-4-4	
Surge voltages between wires for power supply:	1 kV IEC/EN 61 000-4-5	
between wire and ground:	2 kV IEC/EN 61 000-4-5	
Interference suppression:	Limit value class B EN 55 011	
Degree of protection:	Housing: IP 40 IEC/EN 60 529	
Terminals:	IP 20 IEC/EN 60 529	
Enclosure:	Thermoplast with V0-behaviour according to UL subj. 94	
Vibration resistance	Amplitude 0,35 mm frequenzy 10 ... 55 Hz IEC/EN 60 068-2-6	
Climate resistance:	20 / 045 / 04 IEC/EN 60 068-1	
Terminal designation:	EN 50 005	
Wire connection:	0,5 ... 6 mm ² solid or 0,5 ... 4 mm ² stranded wire with sleeve DIN 46 228-1/-2/-3/-4	
Wire fixing:	Box terminal with wire protection	
Mounting:	DIN rail IEC/EN 60 715	
Weight:	approx. 80 g	

Dimensions

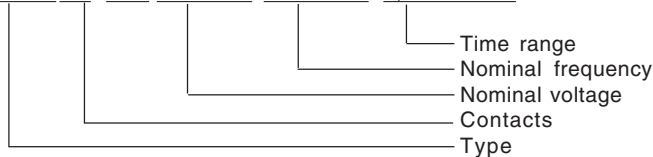
Width x Height x Depth: 17,5 x 90 x 66 mm

Standard type

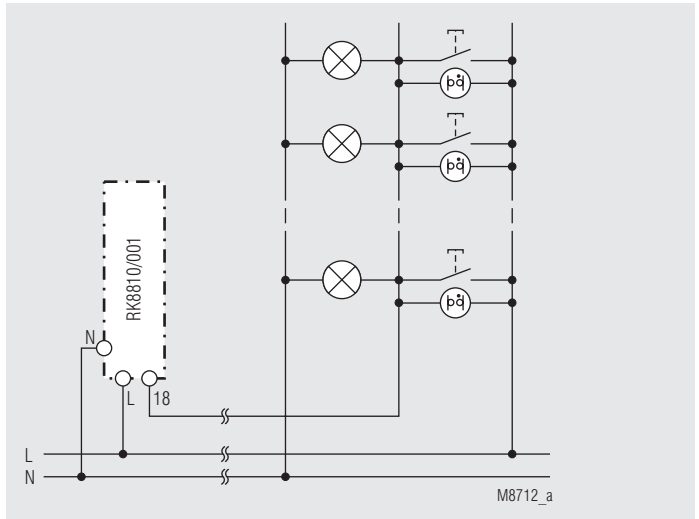
RK 8810.41/001	AC 230 V	50 / 60 Hz	0,5 ... 10 min
Article number:	0058992		
• Output:	1 NO contact, delay		
• Nominal voltage U_N :	AC 230 V		
• Timer range:	0,5 ... 10 min		
• Width:	17,5 mm		

Ordering example

RK 8810.41 /001 AC 230 V 50 / 60 Hz 0,5 ... 10 min



Application example



3-wire circuit N on push button