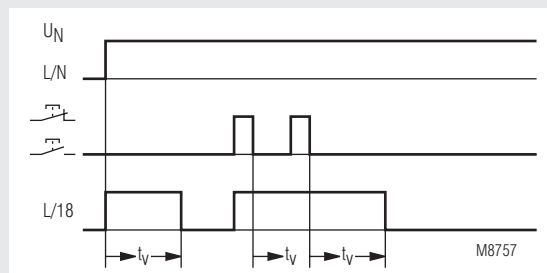


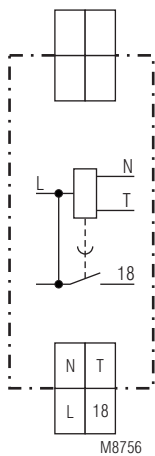


- According to EN 60669
- Setting range 0,5 ... 10 min.
- For 3-wire circuit N on push button
- Can be not retrIGGERED
- Switch for continuous light on unit
- Contact: 16 A
- Width 17,5 mm

Function diagram



Circuit diagram



IK 8810.41

Approval and marking



Application

- Staircase lighting time switch
- Timer, release delay

Function

The timing is not retrIGGERABLE.

Indication

LED: on when output relay activated

Notes

Unit and push button have to be connected to the same phase (see connection diagram) The output contact is not volt free.

Technical Data

Time circuit

Time range: 0,5 ... 10 min
Repeat accuracy: < 1 % of setting value

Input

Nominal voltage U_N : AC 230 V
Voltage range: 0,8 ... 1,1 U_N
Nominal consumption
 apparent power: 4 VA
 effective power: 1 W
Nominal frequency: 50 / 60 Hz
Permitted residual current caused by glow lamps in the push buttons max. 10 glow lamps à 1 mA

Output

Contacts: 1 NO contact, delay
Contact opening gap < 3 mm
Thermal current I_{th} : 16 A
Switching capacity at lamp load
 Glow lamp load: 1200 W at $T_{ein} / T_{aus} = 1 s / 1 s$
Short circuit strength
max. fuse rating: 16 AgL IEC/EN 60 947-5-1
Mechanical life: > 10⁶ switching cycles

Technische Daten

General Data

Nominal operating mode: impulse operation
Temperature range: - 20 ... + 60°C

Clearance and creepage distances

overvoltage category /
 contamination level: 4 kV / 2 IEC 60 664-1

EMC

Electrostatic discharge (ESD): 8 kV (air) IEC/EN 61 000-4-2
 HF-irradiation: 10 V / m IEC/EN 61 000-4-3
 Fast transients: 2 kV IEC/EN 61 000-4-4

Surge voltages between

wires for power supply: 2 kV IEC/EN 61 000-4-5
 between wire and ground: 4 kV IEC/EN 61 000-4-5
 Interference suppression: Limit value class B EN 55 011

Degree of protection:

Housing: IP 40 IEC/EN 60 529
 Terminals: IP 20 IEC/EN 60 529

Enclosure:

Thermoplast with V0-behaviour according to UL subj. 94

Vibration resistance

Amplitude 0,35 mm
 frequency 10 ... 55 Hz IEC/EN 60 068-2-6

Climate resistance:

20 / 045 / 04 IEC/EN 60 068-1

Terminal designation:

EN 50 005

Wire connection:

2 x 2,5 mm² solid or
 2 x 1,5 mm² stranded wire with sleeve
 DIN 46 228-1/-2/-3/-4

Wire fixing:

Flat terminals with self-lifting
 clamping piece IEC/EN 60 999-1
 DIN rail IEC/EN 60 715

Weight:

75 g

Dimensions

Width x Height x Depth: 17,5 x 89 x 58 mm

Standard type

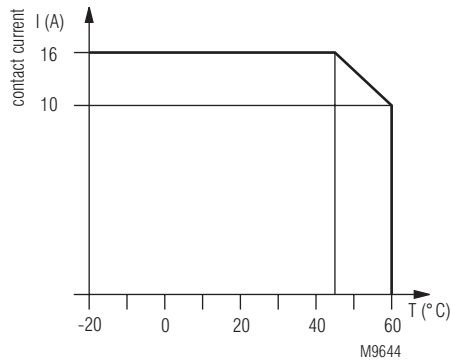
IK 8810.41/001 AC 230 V 50 / 60 Hz 0,5 ... 10 min
 Article number: 0056928 stock item
 • Output: 1 NO contact, delay
 • Nominal voltage U_N : AC 230 V
 • Timer range: 0,5 ... 10 min
 • Width: 17,5 mm

Ordering example

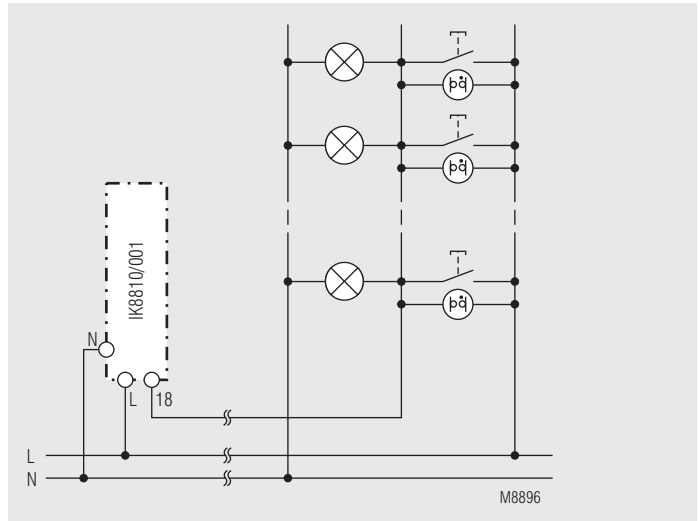
IK 8810 .41 /001 AC 230 V 50 / 60 Hz 0,5 ... 10 min

Time range
 Nominal frequency
 Nominal voltage
 Contacts
 Type

Characteristics



Application example



3-wire circuit N on push button